

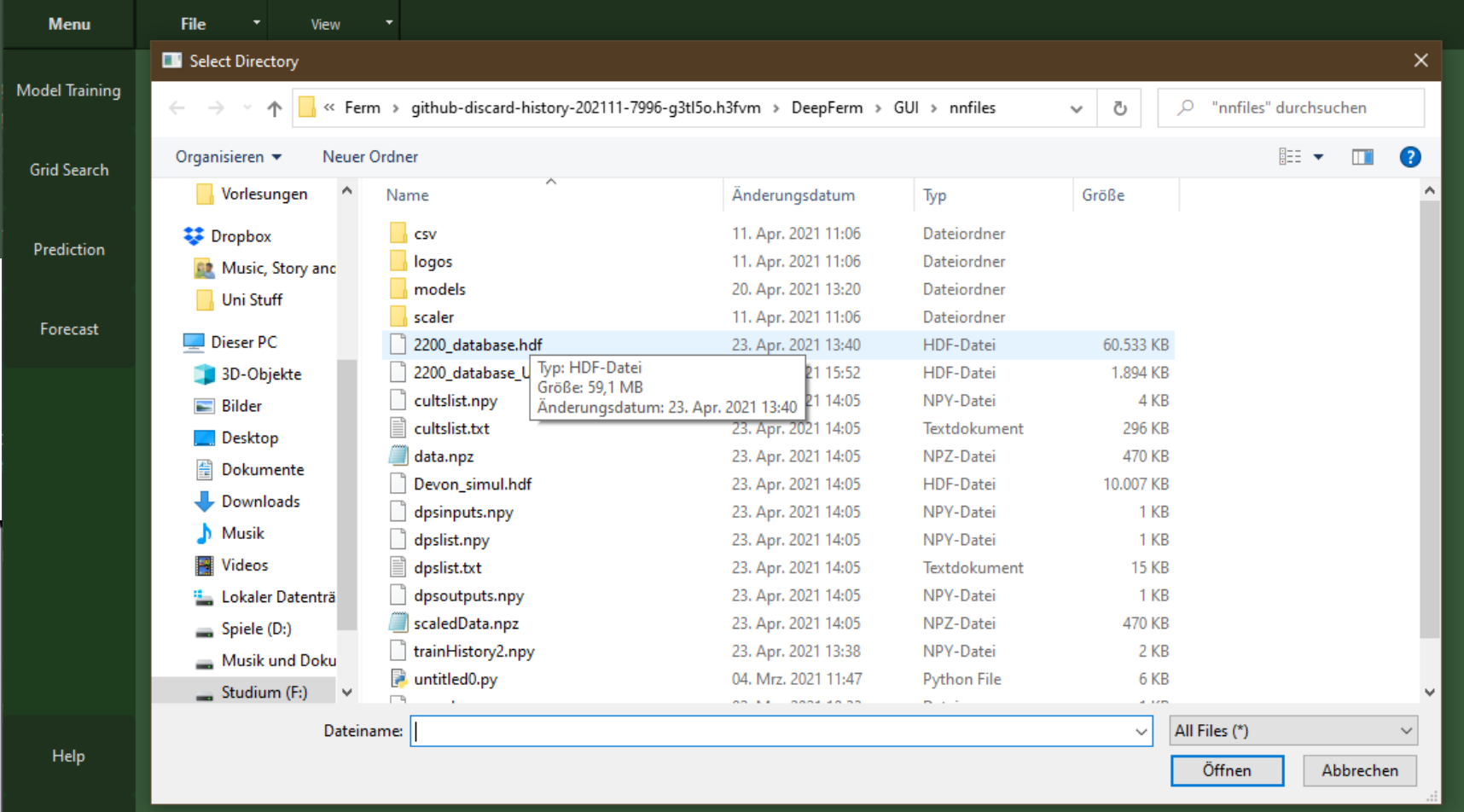
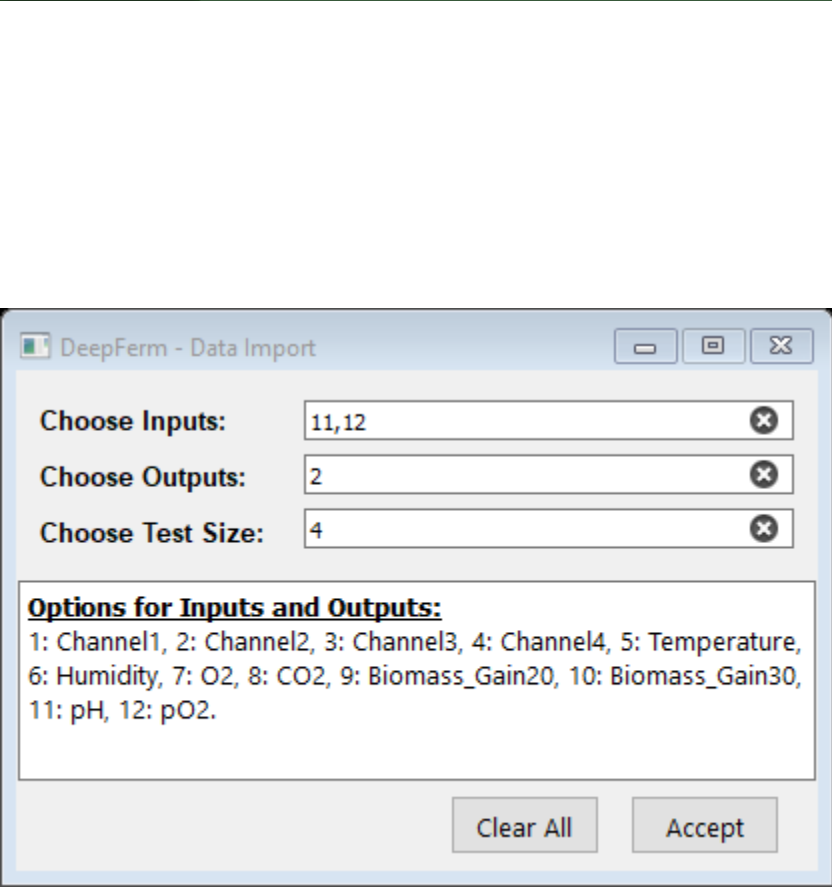
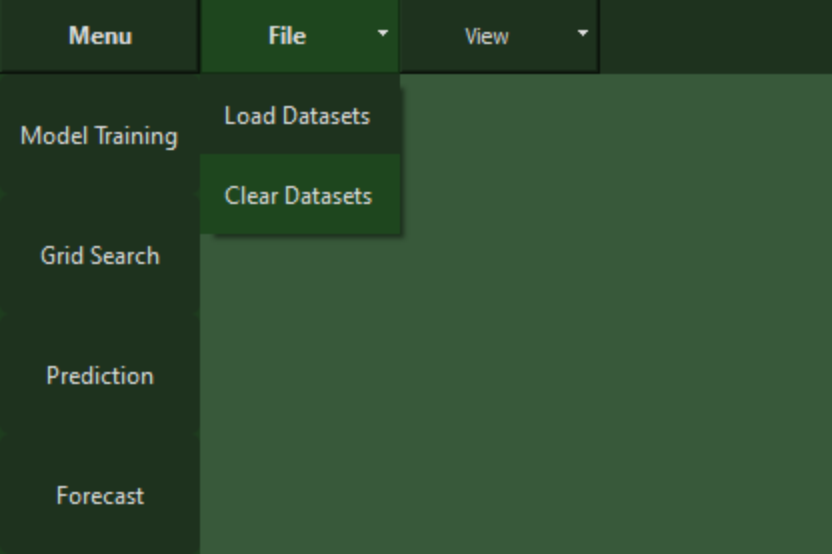
Menu	File	View
Model Training	1 Daten Laden	
Grid Search	2 Modelle Erstellen	
Prediction	3 Hyperparameter ermitteln.	
Forecast	4 Softsensor	

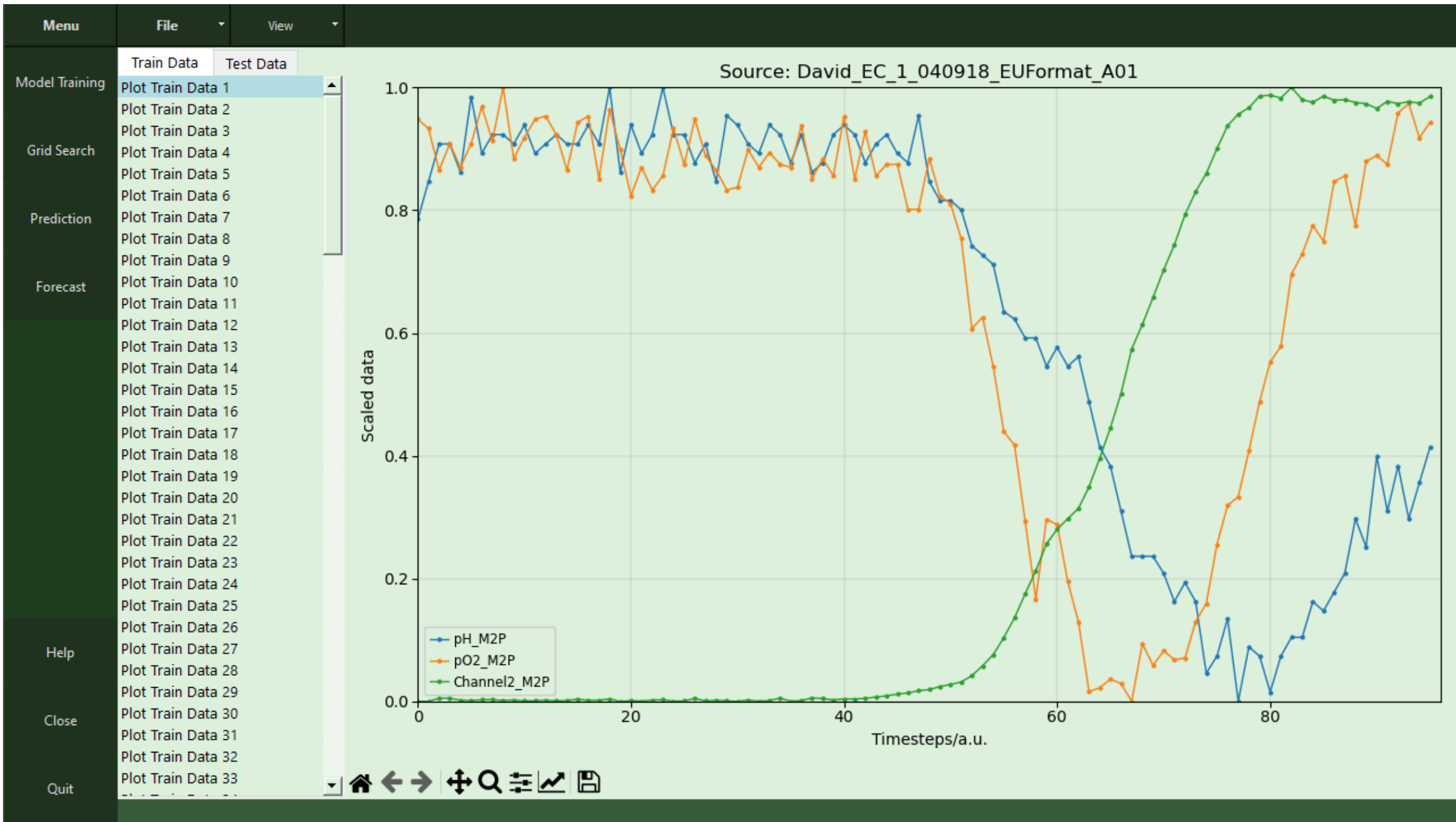
DeepFerm

Help

Close

Quit





Menu

File

View

Model Training

Model Training

Grid Search

Base Structure

Neurons

12

Prediction

Hidden-Layers

2

Forecast

Batch-Size

2

Epochs

20

Advanced Options

Help

Custom Layers

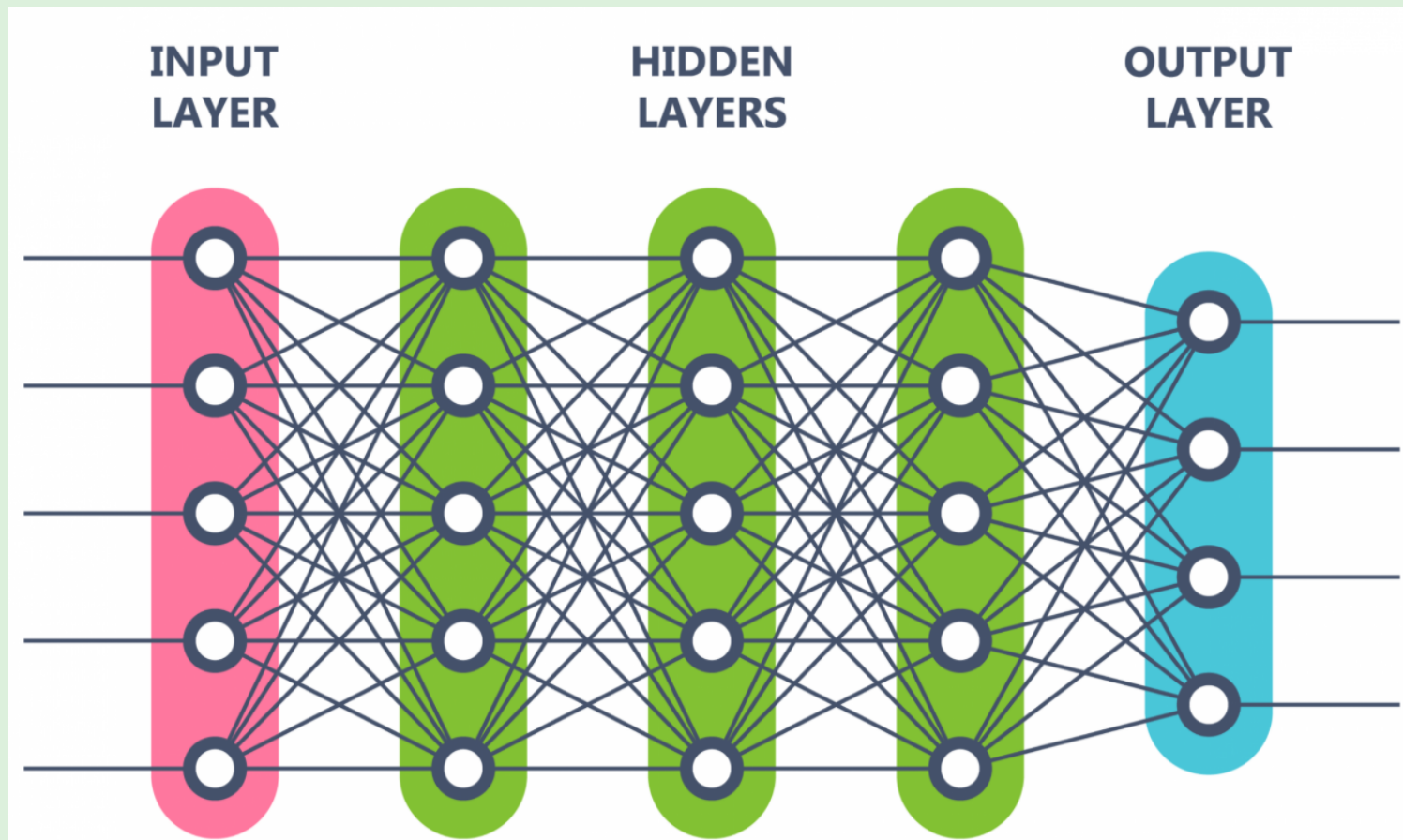
Close

Forecast

Quit

Clear All

Start Model Training



Menu

File

View

Model Training

Model Training

Grid Search

Base Structure

Advanced Options

Prediction

Optimizer

Adam

Learning Rate

0.05

Forecast

Loss

Log Cosh

Metric

Root Mean Squared Error

Validation Split

0.05

Help

Custom Layers

Forecast

Close

Clear All

Start Model Training

Quit

Menu

File

View

Model Training

Model Training

Grid Search

Base Structure

Advanced Options

Prediction

Custom Layers

Forecast

Forecast

Create Forecast Model

No

Input Timesteps

20

Output Timesteps

5

Past Value Approx.

None

Output Mode

Mono

Falls Forecast gewünscht -> Ja

Vorherige Zeitschritte die berücksichtigt werden sollen

Zeitschritte in die „Zukunft“: Muss > 1 sein

Model Name ? X

Enter name of the Model:

OK Cancel

Speicherpfad: .../nnfiles/models/

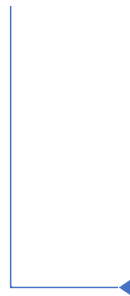
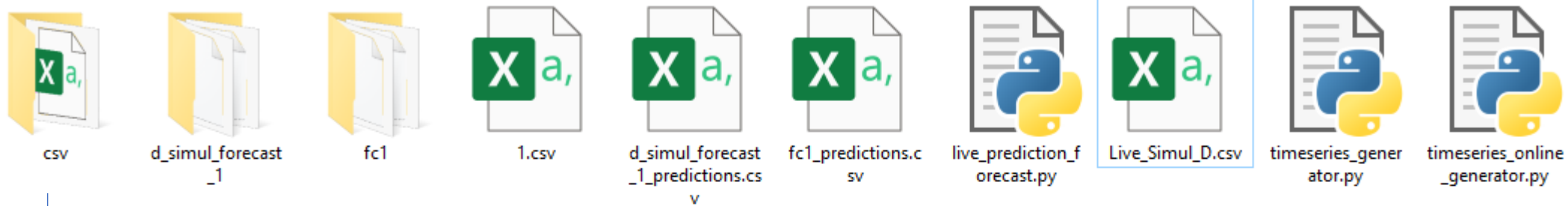
Help

Close

Quit

Clear All

Start Model Training



	A	B
1	Content	Input
2	Data-File-Name	Live_Simul_D
3	Model Name	d_simul_forecast_1
4	Refresh Time	3
5	CSV Header	0
6	Seperator	,



Run -> Startet Loop

